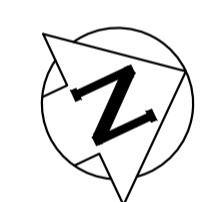
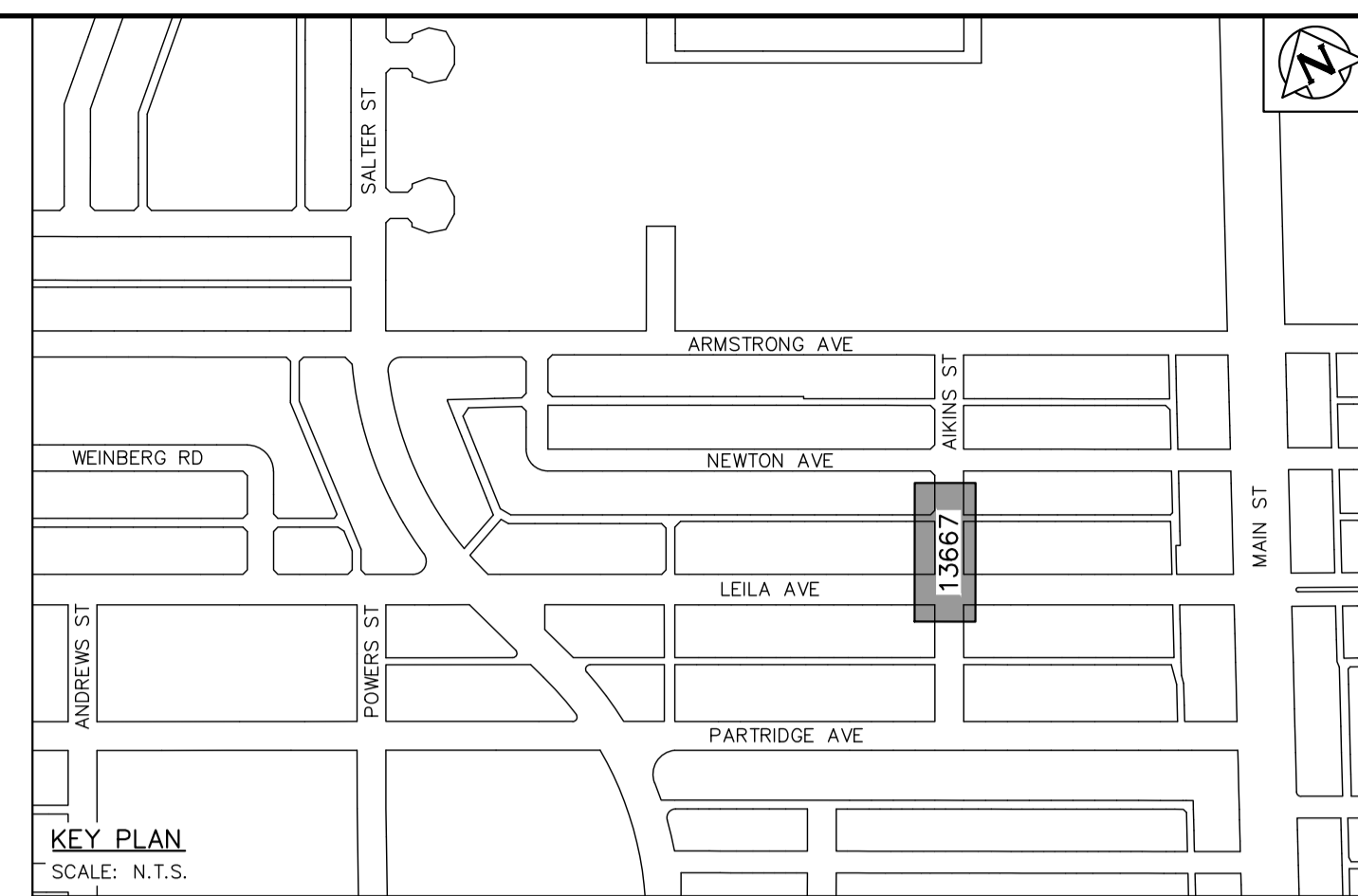


NOTE: CHAINAGES SHOWN ALONG W R OF AIKINS STREET

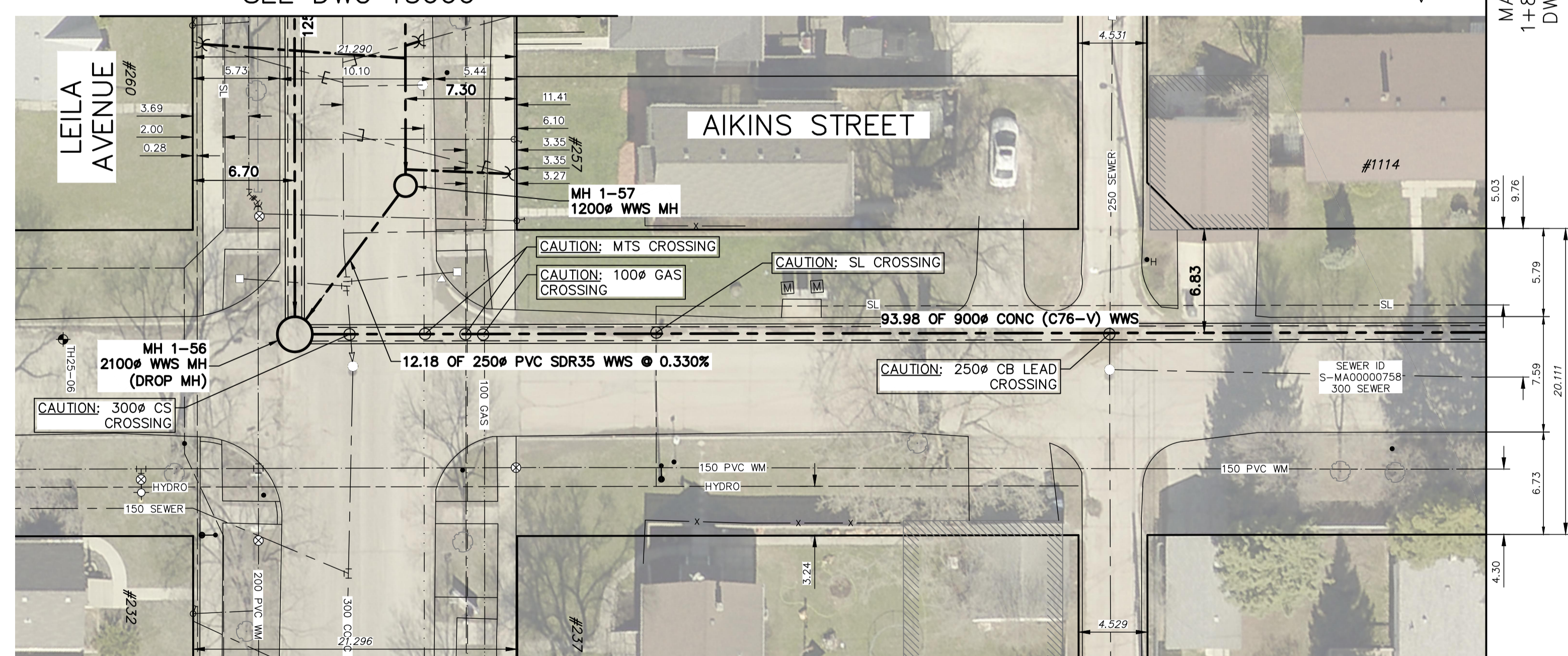
FOR CONTINUATION SEE DWG 13666



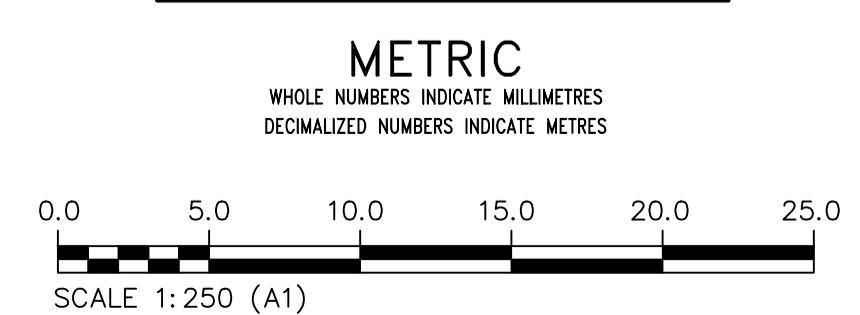
MATCHLINE 1+85.00 SEE DWG 13668



SEWER SERVICE INFORMATION					
ADDRESS	STATUS	SIZE (mm) MATERIAL	COORDINATES AT JUNCTION	COORDINATES AT PROPERTY	REMARKS



FOR INDEX PAGE SEE DWG 13643



**WARNING**  
IF POWER EQUIPMENT OR EXPLOSIVES ARE TO BE USED FOR EXCAVATION ON THIS PROJECT THE CONTRACTOR MUST:  
1) NOTIFY THE GAS COMPANY OF THE PROPOSED LOCATION OF EXCAVATION.  
2) TAKE PRECAUTION TO AVOID DAMAGE TO GAS COMPANY INSTALLATIONS.  
SEE PROVINCIAL REGULATION 21072 FOR DETAILS

**LOCATION APPROVED UNDERGROUND STRUCTURES**  
SUPV. U/G STRUCTURES COMMITTEE DATE  
NOTE:  
LOCATION OF UNDERGROUND STRUCTURES AS SHOWN ARE BASED ON THE BEST INFORMATION AVAILABLE BUT NO GUARANTEE IS GIVEN THAT ALL EXISTING UTILITIES ARE SHOWN OR THAT THE GIVEN LOCATIONS ARE EXACT. CONFIRMATION OF EXISTENCE AND EXACT LOCATION OF ALL SERVICES MUST BE OBTAINED FROM THE INDIVIDUAL UTILITIES BEFORE PROCEEDING WITH CONSTRUCTION.

VERTICAL DATUM: CGVD28 (HT2.0 Geoid)  
HORIZONTAL DATUM: NAD83 (June 1990), Zone 14

NO.	ISSUED FOR CONSTRUCTION	DATE (YYYY/MM/DD)	BY
0	ISSUED FOR CONSTRUCTION	2026/03/10	MID
	REVISIONS	DATE (YYYY/MM/DD)	BY

<b>KGS GROUP</b>		ENGINEER'S SEAL	
DESIGNED BY: MID	CHECKED BY: TLE	ORIGINAL DRAWING SEALED BY: M.A. IANKOVA-DEDOVA 2026/03/11	
DRAWN BY: GEL	APPROVED BY: RBO	CONSULTANT DRAWING NUMBER: C1-26	
SCALE: HORIZONTAL 1:250, VERTICAL 1:50	RELEASED FOR CONSTRUCTION: DUANE BAKER	DATE: 2026/03/12	

ENGINEER'S SEAL  
ORIGINAL DRAWING SEALED BY: M.A. IANKOVA-DEDOVA 2026/03/11  
CONSULTANT DRAWING NUMBER: C1-26

**THE CITY OF WINNIPEG**  
WATER AND WASTE DEPARTMENT  
ENGINEERING SERVICES DIVISION

**ARMSTRONG SEWER RELIEF WORKS**  
CONTRACT 1  
**AIKINS STREET**  
LEILA AVENUE TO  
8.3 S OF NEWTON AVENUE

SHEET 26 OF 46  
CITY DRAWING NUMBER 13667